

THE COLLEGE OF NEW JERSEY
 ADMINISTRATIVE SERVICES BUILDING, RM 206
 2002 PENNINGTON ROAD
 EWING, NJ 08628-0718
 PHONE: 609-771-3329

LANDSCAPE ARCHITECT
STUDIO | BRYAN HANES
 340 N. 12TH STREET, SUITE 415
 PHILADELPHIA, PA 19107
 PHONE: 215-923-2858

**BROWER
 STUDENT CENTER
 ADDITION AND
 RENOVATION**

SITE PLAN

SCALE: 1" = 20'
 DRAWN BY: RA
 CHECKED BY: BH
 CAD FILE: 1704_SP.DWG
 DATE: 2017/08/02
 PROJECT NO.: 1704

REVISIONS	
NO.	DESCRIPTION

L1.00

DESIGN DEVELOPMENT 2017/08/02
 NOT FOR CONSTRUCTION

Hawthorn *Crataegus viridis* 'Winter King'



Sedges and evergreen ferns



American elm *Ulmus americana* 'Princeton'



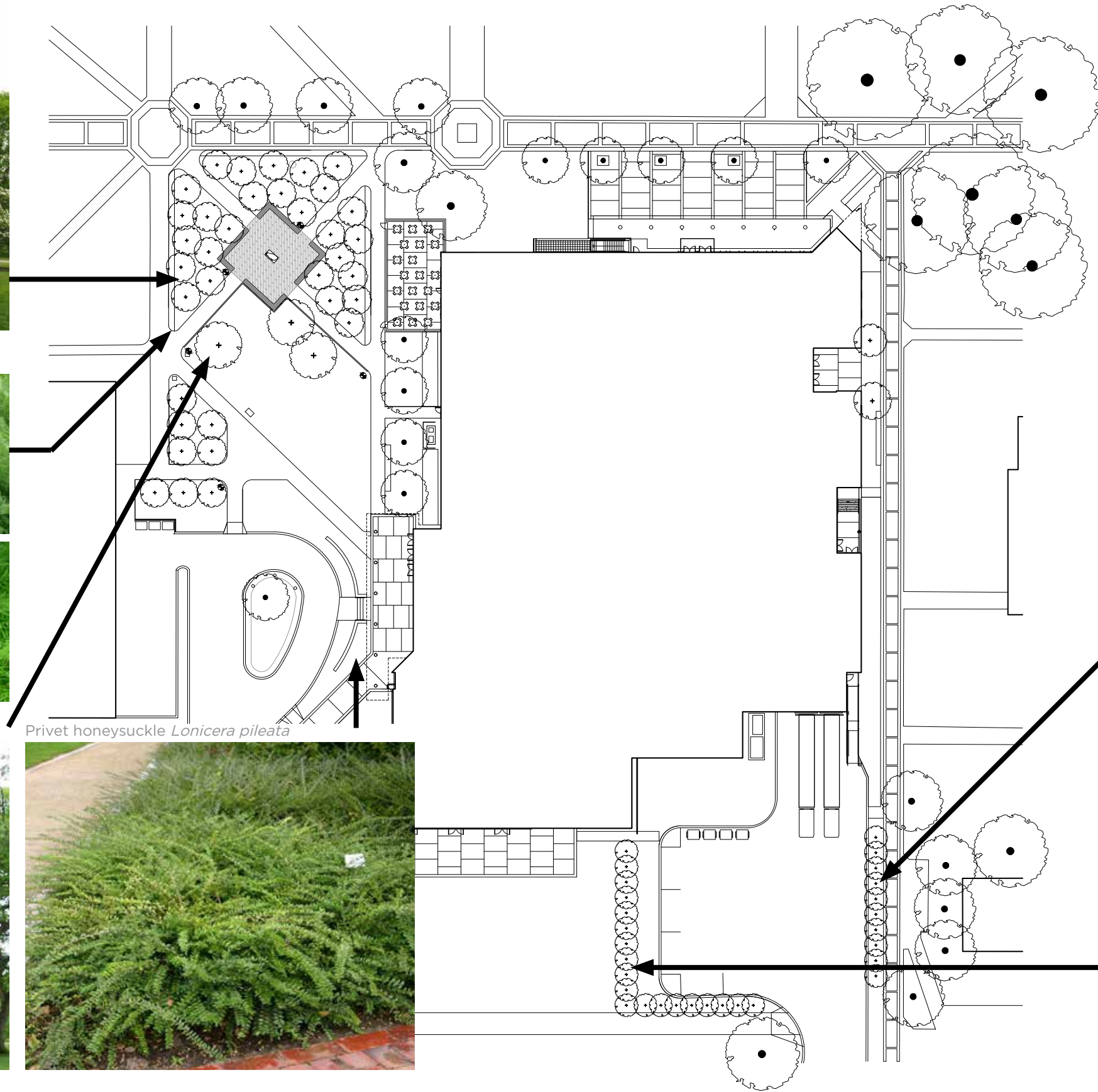
Privet honeysuckle *Lonicera pileata*



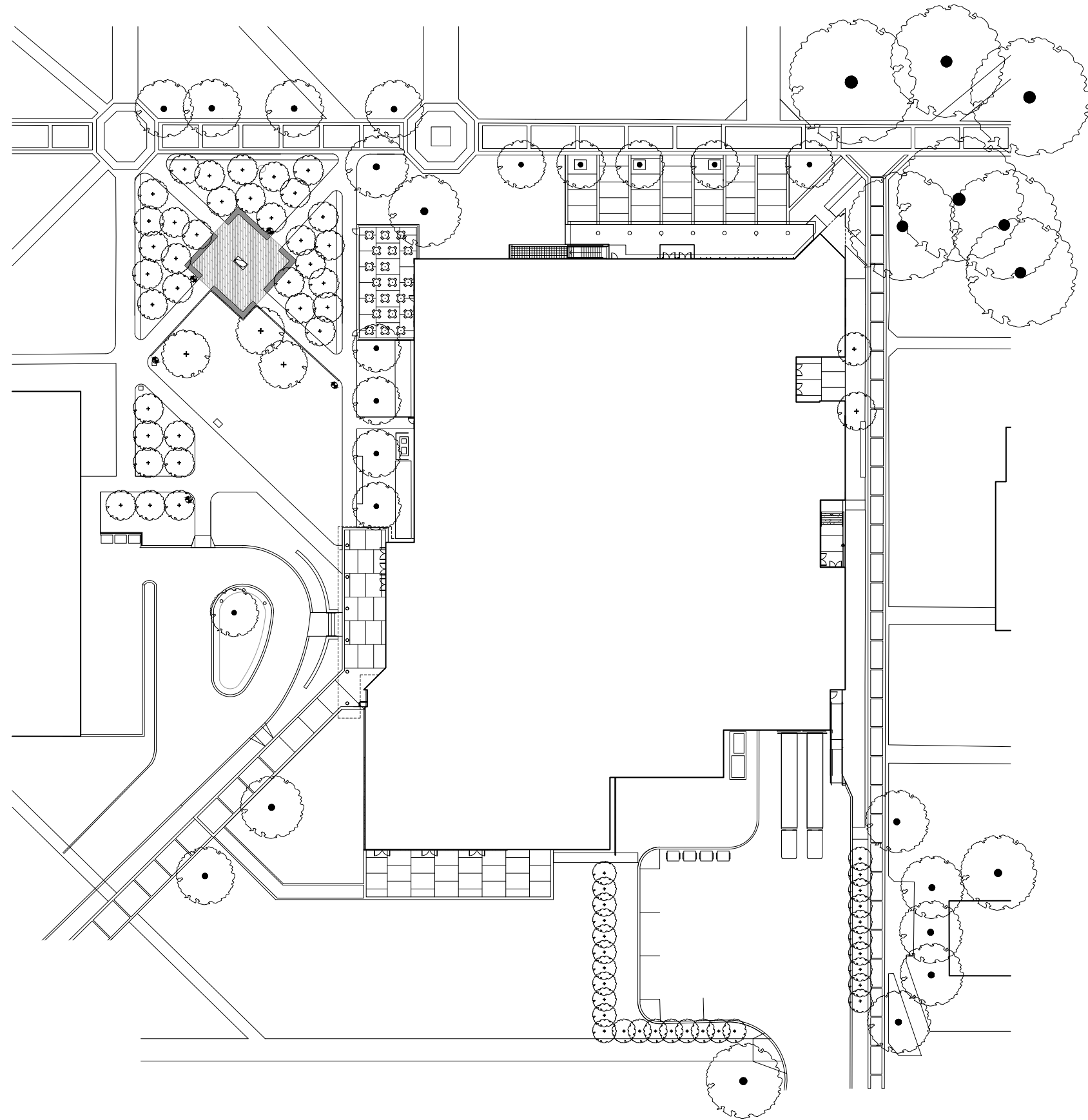
Cherry laurel *Prunus laurocerasus*



European hornbeam *Carpinus betulus*



**THE COLLEGE OF NEW JERSEY: BROWER STUDENT CENTER RENOVATIONS AND ADDITION
PLANT PALETTE**



THE COLLEGE OF NEW JERSEY: BROWER STUDENT CENTER RENOVATIONS AND ADDITION
MATERIALS PALETTE